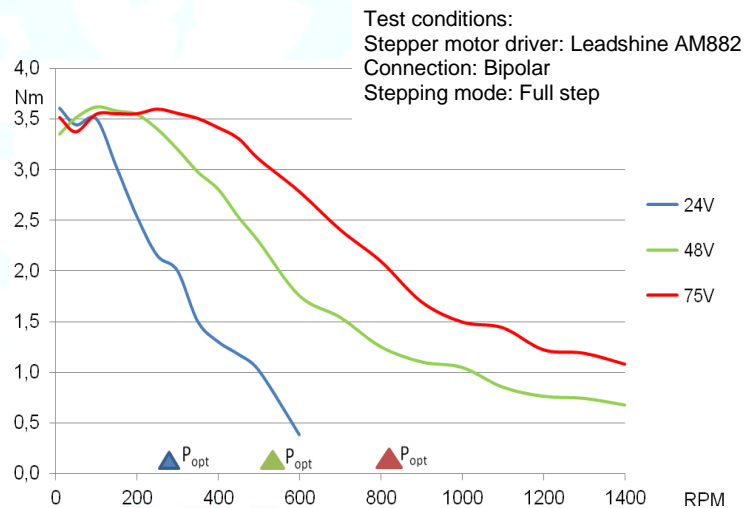
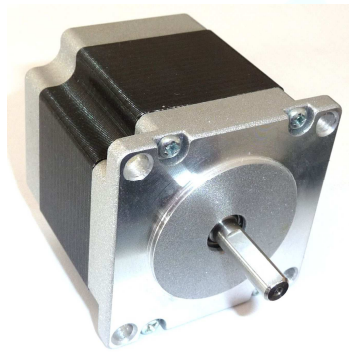
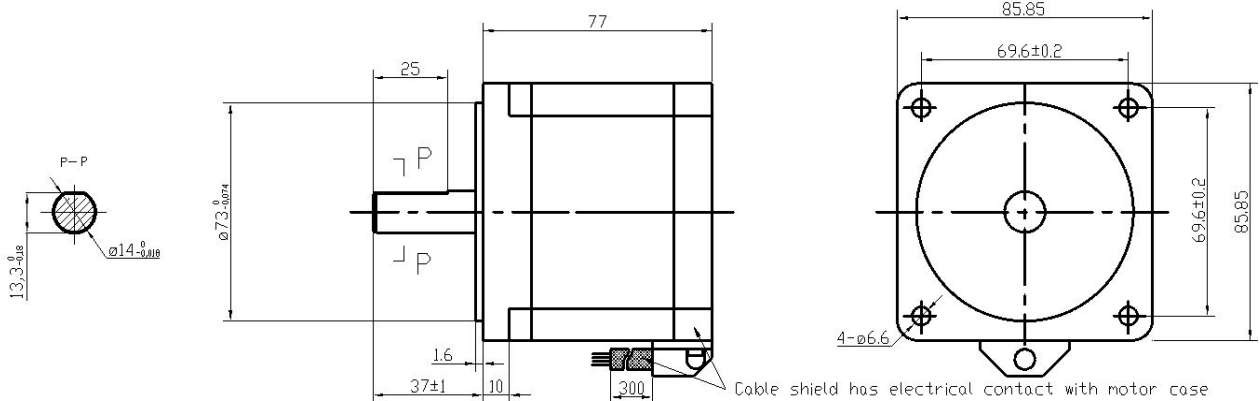


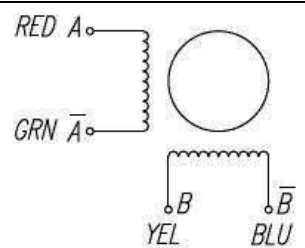
Hybrid Stepper Motor 86BYGH250B-02R

Motor with shielded cable and cable grommet

Mechanical Dimensions:



Electrical Specifications:

Biipolar			
			
No. of phases	2		
Step Angle	$1.8 \pm 0.09^\circ$		
Rated Voltage (V)	2.3		
Current (A)	5.9		
Resistance (Ω)	0.38		
Inductance (mH)	3.5		
Holding Torque coils on DC (Nm)	5.5		
Holding Torque step mode (Nm)	3.9		
Rotor Inertia (kgcm ²)	1.7		
Insulation Class	B		
Insulation Resistance	100M Ω . 500VDC		
Weight (kg)	2.2		