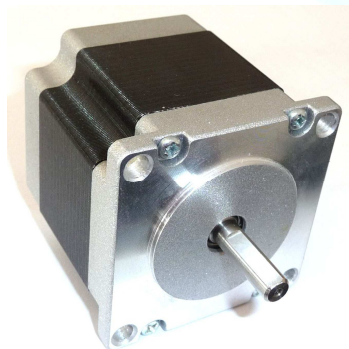
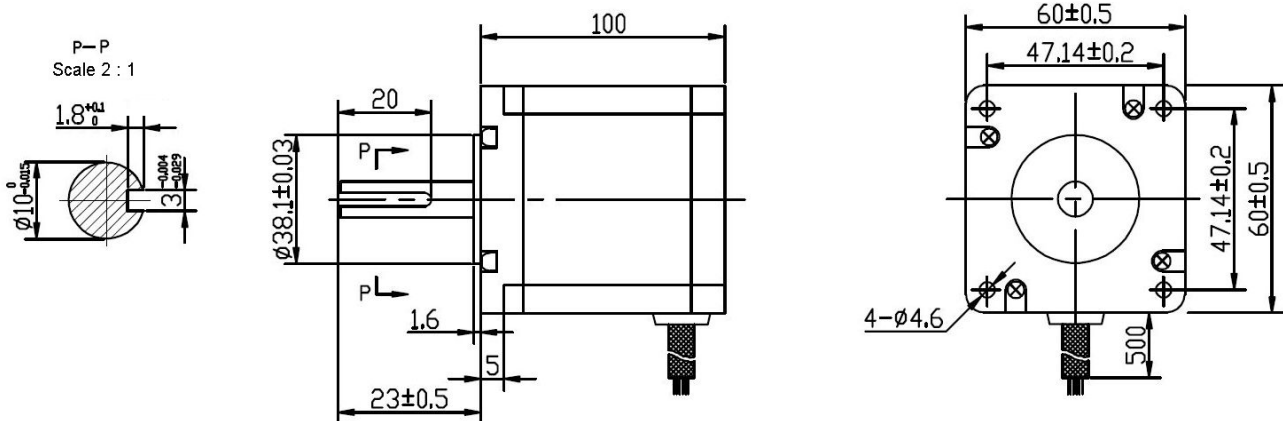
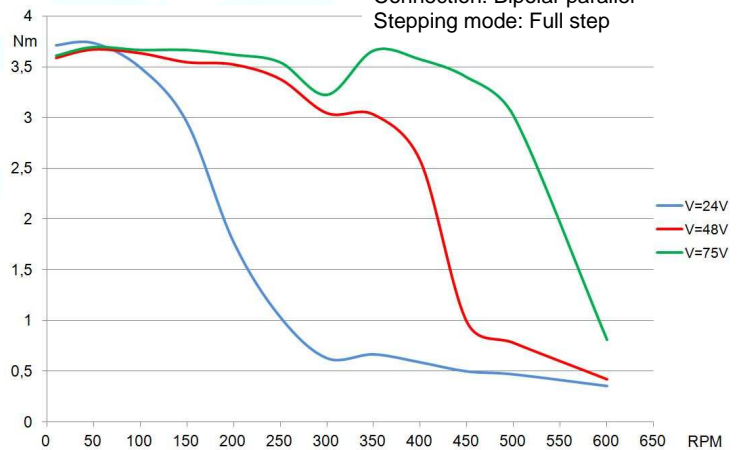


# Hybrid Stepper Motor 60BYGH450E-02A

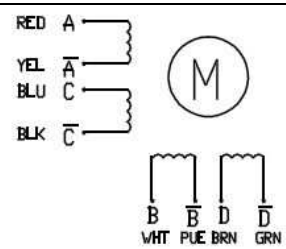
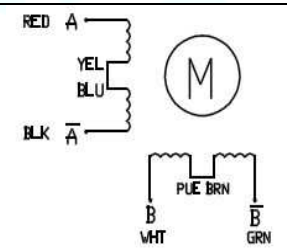
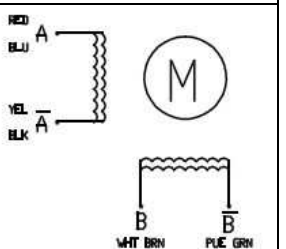
## Mechanical Dimensions:



Test conditions:  
 Stepper motor driver: Leadshine EM806  
 Connection: Bipolar parallel  
 Stepping mode: Full step



## Electrical Specifications:

	Unipolar	Bipolar Serial	Bipolar Parallel
			
No. of phases	4	2	2
Step Angle	1.8 ± 0.09°		
Rated Voltage (V)	5.1	7.3	3.65
Current (A)	2.3	1.65	3.3
Resistance (Ω)	2.2	4.4	1.1
Inductance (mH)	4.8 ± 20 %	19.2 ± 20 %	4.8 ± 20 %
Holding Torque coils on DC (Nm)	3.0	3.9	3.9
Holding Torque step mode (Nm)	2.1	2.7	2.7
Rotor Inertia (gcm <sup>2</sup> )	1000		
Insulation Class	B		
Insulation Resistance	100MΩ, 500VDC		
Weight (kg)	1.72		

03.11.15