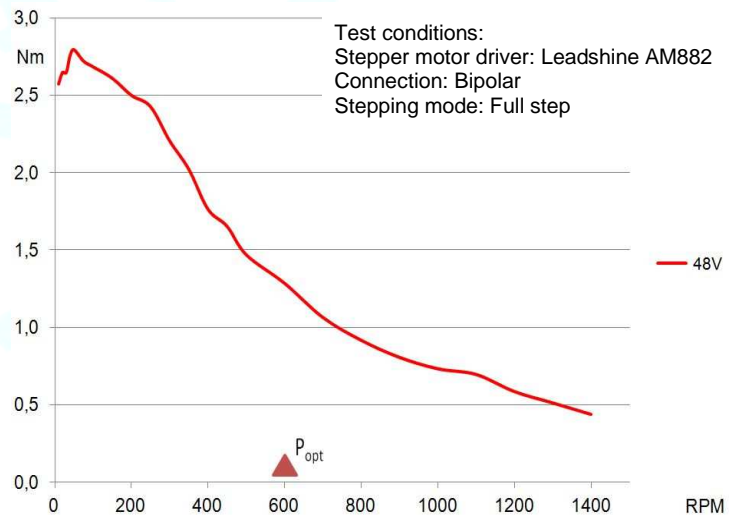
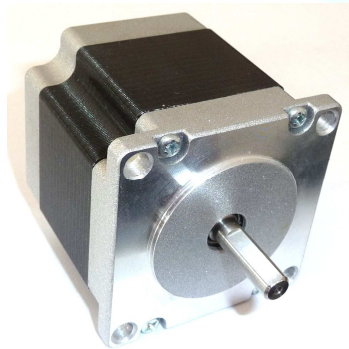
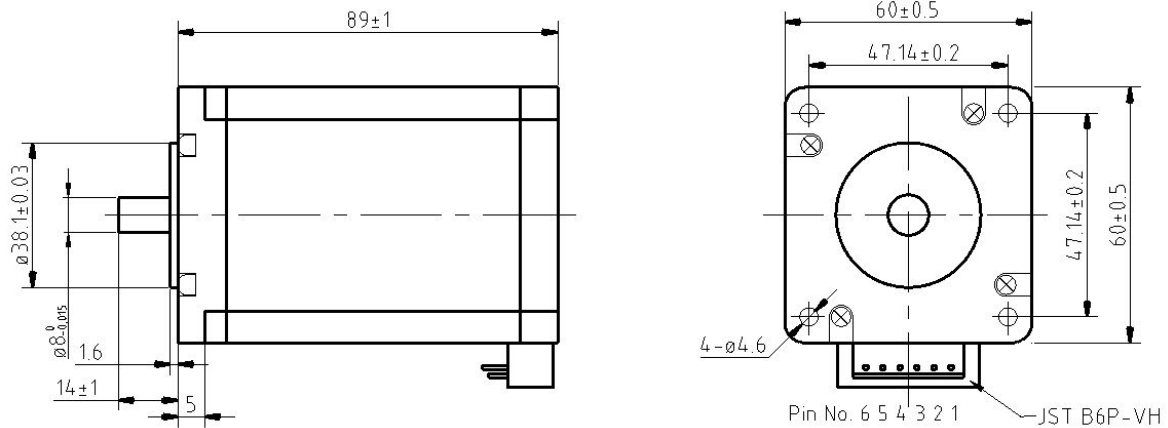


Hybrid Stepper Motor 60BYGH250D-02Y

Mechanical Dimensions:



Electrical Specifications:

	Bipolar	
	Motor connection	
	Pin No.	Winding
	1	A
	2	A\
	3	B
	4	B\
	5	
	6	
No. of phases	2	
Step Angle	1.8 ± 0.09°	
Rated Voltage (V)	3.07	
Current (A)	4.2	
Resistance (Ω)	0.73	
Inductance (mH) ±20 %	3.3	
Holding Torque coils on DC (Nm)	3.3	
Holding Torque step mode (Nm)	2.3	
Rotor Inertia (gcm ²)	840	
Insulation Class	B	
Insulation Resistance	100MΩ, 500VDC	
Weight (kg)	1.5	

16.03.15