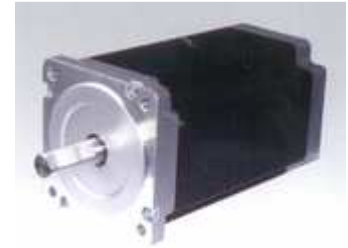


Hybrid Stepper Motors Hybride Schrittmotoren

NEMA format 34 / NEMA Format (86x86 mm)

86BYGH



General Specifications / allgemeine Spezifikationen:

Step Angle.....	Schrittwinkel.....	1.8°
Step Accuracy	Schrittgenauigkeit	± 5%
Temperature Rise	Erwärmung	Δt = max. 80°C
Ambient Temperature Range.	Umgebungstemperatur	-20°C – 50°C
Insulation Resistance	Isolationswiderstand	100MΩ min. 500V DC
Dielectric Strength	Spannungsfestigkeit	500V AC/1 min

Electrical Specifications / elektrische Spezifikationen:

Model		Motor Length	Holding Torque	Lead Wire	Rated Current	Phase Resistance	Phase Inductance	Rotor Inertia	Detent Torque	Shaft Ø d	Motor Weight
Modell		Motor Länge	Halte-kraft	Anzahl Litzen	Nenn-strom	Widerstand/Phase	Induktivität/Phase	Masse-trägheit	Rast-moment	Achs-Ø d	Motor Gewicht
		(mm)	(N·m)		(A)	(Ω)	(mH)	(kg·cm ²)	(N·cm)	(mm)	(kg)
			Min.			±15%	±20%	Typ.	Typ.		
86BYGH250A-01	B	65	3.1	4	6.0	0.34	1.72	1.2	13.2	13	1.7
86BYGH250A-02	B	65	3.4	4	4.0	0.73	3.8	1.2	13.2	14	1.7
86BYGH250A-04	B	65	2.6	4	3.0	0.9	3.2	1.2	13.2	9.5	1.7
86BYGH250A-04A	B	65	2.6	4	3.0	0.9	3.2	1.2	13.2	8	1.7
86BYGH250A-04B	B	65	2.6	4	3.0	0.9	3.2	1.2	13.2	10	1.7
86BYGH250A-04C	B	65	2.6	4	3.0	0.9	3.2	1.2	13.2	10	1.7
86BYGH250A-04D	B	65	2.6	4	3.0	0.9	3.2	1.2	13.2	9.53	1.7
86BYGH250A-04E	B	65	2.6	4	3.0	0.9	3.2	1.2	13.2	8	1.7
86BYGH250A-05	B	65	3.4	4	4.0	0.84	4.2	1.2	13.2	10	1.7
86BYGH250A-06	B	65	2.6	4	3.0	0.6	2.5	1.2	13.2	10	1.7
86BYGH450A-03	U	65	2.5	8	3.0	1.25	3.2	1.2	13.2	14	1.7
	BS		3.5		2.1	2.50	12.8				
	BP		3.5		4.2	0.63	3.2				
86BYGH450A-04	U	65	2.7	8	4.0	0.7	1.86	1.2	13.2	12.7	1.7
	BS		3.8		2.8	1.4	7.44				
	BP		3.8		5.6	0.35	1.86				
86BYGH250B-01	B	77	5.2	4	6.0	0.4	3.07	1.7	18.5	12.7	2.2
86BYGH250B-02R	B	77	5.5	4	6.0	0.38	3.5	1.7	18.5	14	2.2
86BYGH250B-03	B	77	5.8	4	4.2	1.54	11.5	1.7	18.5	12	2.2
86BYGH250B-09R	B	77	5.5	4	6.0	0.38	3.5	1.7	18.5	14	2.2
86BYGH250B-10R*	B	77	5.5	4	6.0	0.38	3.5	1.7	18.5	14	2.2
86BYGH450B 86BYGH450BD*	U	77	3.9	8	4.2	0.75	3.5	1.7	18.5	12.7	2.2
	BS		5.5		2.95	1.5	14.0				
	BP		5.5		5.9	0.38	3.5				
86BYGH450B-04	U	77	3.9	8	4.2	0.75	3.5	1.7	18.5	14	2.2
	BS		5.5		2.95	1.5	14.0				
	BP		5.5		5.9	0.38	3.5				
86BYGH450B-18*	U	77	3.9	8	4.2	0.75	3.5	1.7	18.5	12.7	2.2
	BS		5.5		2.95	1.5	14.0				
	BP		5.5		5.9	0.38	3.5				
86BYGH250D	B	96	5.4	4	4.0	0.41	3.4	2.7	20.6	14	3.0
86BYGH250D-02R	B	96	8.2	4	6.4	0.47	4.2	2.7	20.6	14	3.0

Model		Motor Length	Holding Torque	Lead Wire	Rated Current	Phase Resistance	Phase Inductance	Rotor Inertia	Detent Torque	Shaft \varnothing d	Motor Weight
Modell		Motor Länge	Halte-kraft	Anzahl Litzen	Nenn-strom	Widerstand/Phase	Induktivität/Phase	Masse-trägheit	Rast-moment	Achs- \varnothing d	Motor Gewicht
		(mm)	(N·m)		(A)	(Ω)	(mH)	(kg·cm ²)	(N·cm)	(mm)	(kg)
			Min.			$\pm 15\%$	$\pm 20\%$	Typ.	Typ.		
86BYGH450D-02 86BYGH450D-02A*	U	96	5.8	8	4.5	0.94	4.2	2.7	20.6	14	3.0
	BS		8.2		3.2	1.88	16.8				
	BP		8.2		6.4	0.47	4.2				
86BYGH250E-01	B	114	8.5	4	6.0	0.44	3.9	3.5	27	14	3.6
86BYGH250E-02	B	114	10.8	4	5.0	1.18	11.1	3.5	27	14	3.6
86BYGH250E-03BR	B	114	10.8	4	5.0	1.18	11.1	3.5	27	14	3.6
86BYGH450E-03 86BYGH450E-03B 86BYGH450E-03C*	U	114	7.3	8	4.0	1.3	6.0	3.5	27	14	3.6
	BS		10.3		2.8	2.6	24.0				
	BP		10.3		5.6	0.65	6.0				
86BYGH450G-02	U	137	9.4	8	4	1.43	8.2	3.3	22.6	14	4.6
	BS		12		2.8	2.86	32.9				
	BP		12		5.6	0.72	8.2				
86BYGH250H-02	B	156	13.2	4	5.0	0.75	8.1	4.9	41.2	16	5.4
86BYGH250H-03	B	156	13.4	4	5.0	1.27	10.6	4.9	41.2	14	5.4
86BYGH250H-04	B	156	13.2	4	5.0	0.85	8.7	4.9	41.2	12	5.4
86BYGH250H-06	B	156	11.6	4	6.0	0.47	5.2	4.9	41.2	14	5.4
86BYGH250H-07	B	156	14.7	4	4.2	2.76	29.8	4.9	41.2	14	5.4
86BYGH450H-02 86BYGH450H-02B	U	156	12.0	8	5.0	1.26	7.1	4.9	41.2	16 14	5.4
	BS		14.9		3.50	2.52	28.4				
	BP		14.9		7.0	0.63	7.1				
86BYGH450H-03 86BYGH450H-03A 86BYGH450H-03AA*	U	156	12.5	8	6.0	0.97	5.65	4.9	41.2	14	5.4
	BS		15.3		4.2	1.94	22.5				
	BP		15.3		8.4	0.48	5.65				

U = Unipolar Connection / unipolarer Anschluss

B = Bipolar Connection / bipolarer Anschluss

BS = Bipolar Series Connection / bipolar serieller Anschluss

BP = Bipolar Parallel Connection / bipolar paralleler Anschluss

* = with double shaft / mit Doppelwelle $\varnothing 8 \times 25$

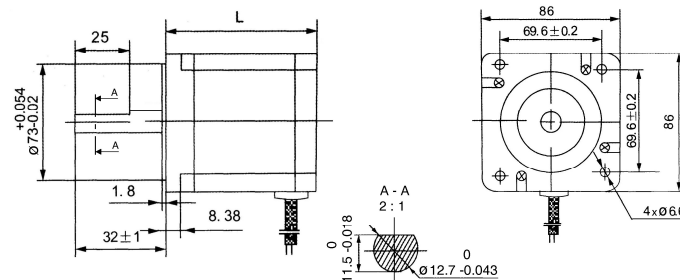
R = Shielded cable + cable grommet / geschirmtes Kabel + Kabelausführung bzw. Zugsicherung

For detailed product data please see single data sheet. / Technische Details entnehmen Sie bitte dem Einzeldatenblatt.

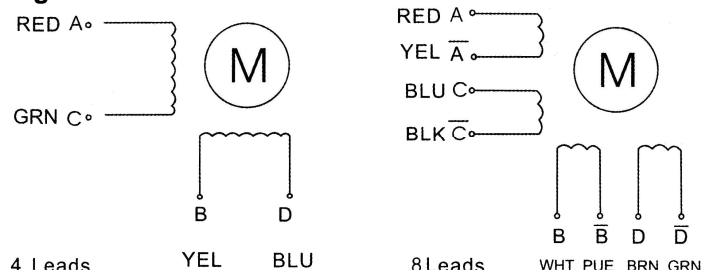
All stepper motors are available with double shaft or with double shaft and encoder. / Alle Motoren sind auf Kundenwunsch mit Doppelwelle oder mit Doppelwelle und Encoder lieferbar.

4-lead wire motors are optional available with shielded cable and shielded round 6-pin connector ready-for-use / 4-Drahtmotoren sind auch mit geschirmtem Kabel und vollgeschirmtem 6-Pin Rundstecker konfektioniert lieferbar.

Mechanical Dimensions / mechanische Abmessungen:



Wiring Diagram / Verdrahtungsschema:



04.10.2018