

Drag Chain N25, open version, swivel cover at the inner side

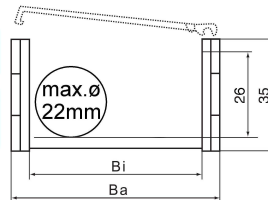
Schleppkette N25, offene Bauart, Schwenkabweckung innen

Drag chain N25 can be easily opened and closed for insertion of cables with swivel-type cover elements.

Die Schleppkette N25 lässt sich für die Kabeleinführung durch schwenkbare Abdeckelemente einfach öffnen und schließen.



Dimensions in mm:

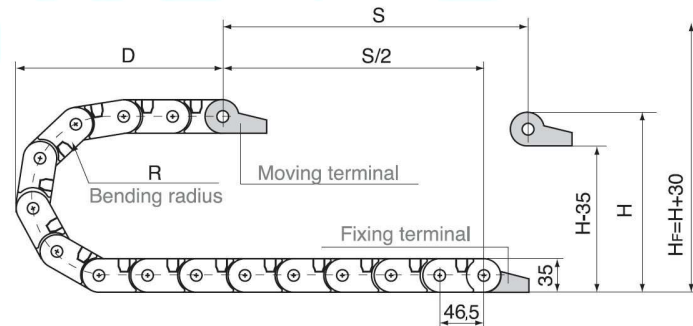


Abmessungen in mm:

Version	-38	-57	-77				
B _a :	53	72	92				
B _i :	38	57	77				
R:	Standard 55, optional 75, 100, 125, 150						
H:	= 2 x R + 35 mm						
H _F :	= H + 30 mm						
K:	= π x R + safety ratio						

Dimensions can deviate up to 1 mm.

Maße können bis zu 1 mm abweichen.

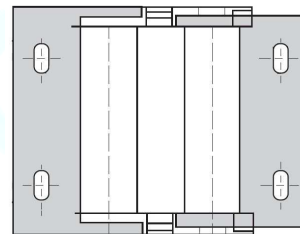


Segments per m:

Segmente pro m: 22

End segments:

Endstücke:



25.??S.1P

(outer end segment)
(äußeres Endstück)

25??S.2P

(inner end segment)
(inneres Endstück)

Calculation of drag chain dimensions (length):

Berechnung der Schleppkettendimensionierung (Länge):

$$L = S/2 + K$$

L = Length

L = Länge

S = Stroke

S = Fahrweg

D = Distance in final position

D = Maß in Endposition

K = π x R + safety ratio

K = π x R + Sicherheit

H_F = required clearance

H_F = erforderliche Einbauhöhe

H_F = H + 30 mm

R	55	75	100	125	150
H	145	185	235	285	335
D	125	150	170	195	220
K	276	346	414	496	578

Order information: **Bestellinformation:**

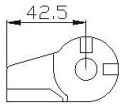
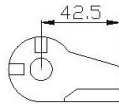
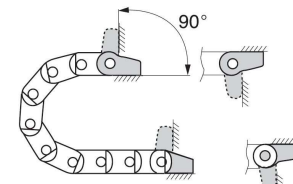
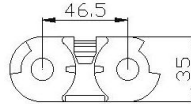
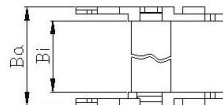
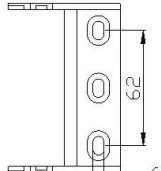
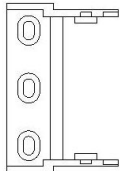
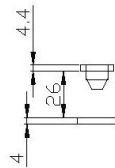
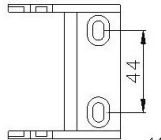
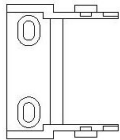
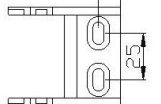
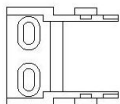
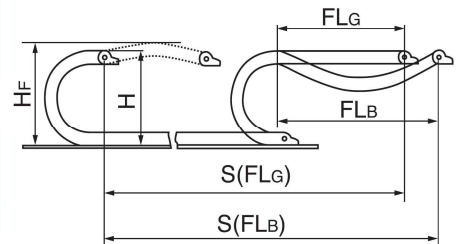
N 25-57 R55

Radius supported by chain element / von der Kette unterstützter Radius
 Inner width Bi / Breite innen Bi
 Inner height, chain type / Höhe innen, Kettentyp
 Chain type / Kettentyp

14.05.2013

Drag Chain N25, open version, swivel cover at the inner side

Schleppkette N25, offene Bauart, Schwenkabdeckung innen

Single part drawings:
Einzelteilzeichnungen:
Mounting options:
Montageoptionen:
Inner end segment

Outer end segment

Element

N25-77

N25-57

N25-38

Unsupported horizontal length:
Freitragende horizontale Länge:

FLG: with straight upper part
 mit geradem Oberteil

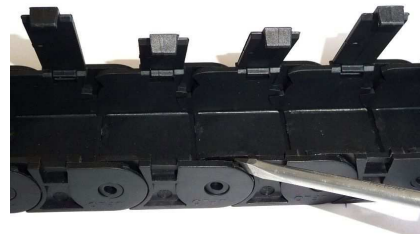
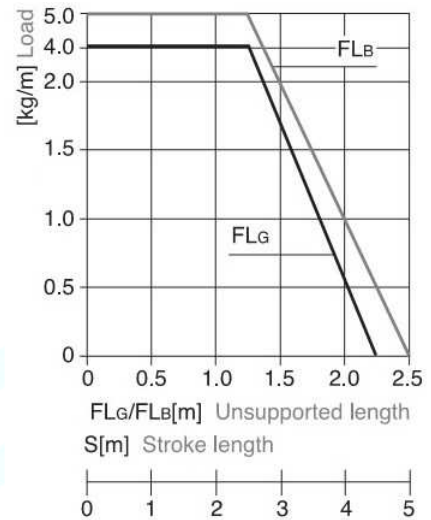
FLB: with permitted deflection
 mit erlaubter Durchbiegung

Instructions for mounting:

1. Open chain:
Kette öffnen:


Montagehinweise:

2. Element separation:
Elemente trennen:


 First open chain in the respective area!
 Kette erst im entsprechenden Bereich öffnen!

Accessories:

Zubehör:
Strain relief comb parts for external fixation, 4, 6 or 8 teeth, width 38, 58 and 78 mm, hole separation 20, 40 and 60 mm, for 6 mm countersunk screws.

Available for all drag chain versions. On the N25 type, they can be hooked onto the end segments.

Zugentlastungskämme für externe Anbringung, 4, 6 oder 8 Zähne, Breite 38, 58 und 78 mm, Lochabstand 20, 40 und 60 mm, für 6 mm Senkschrauben.

Für alle Versionen geeignet. Können beim Typ N25 an den Endstücken eingehängt werden.

Sample application:
Anwendungsbeispiel:
